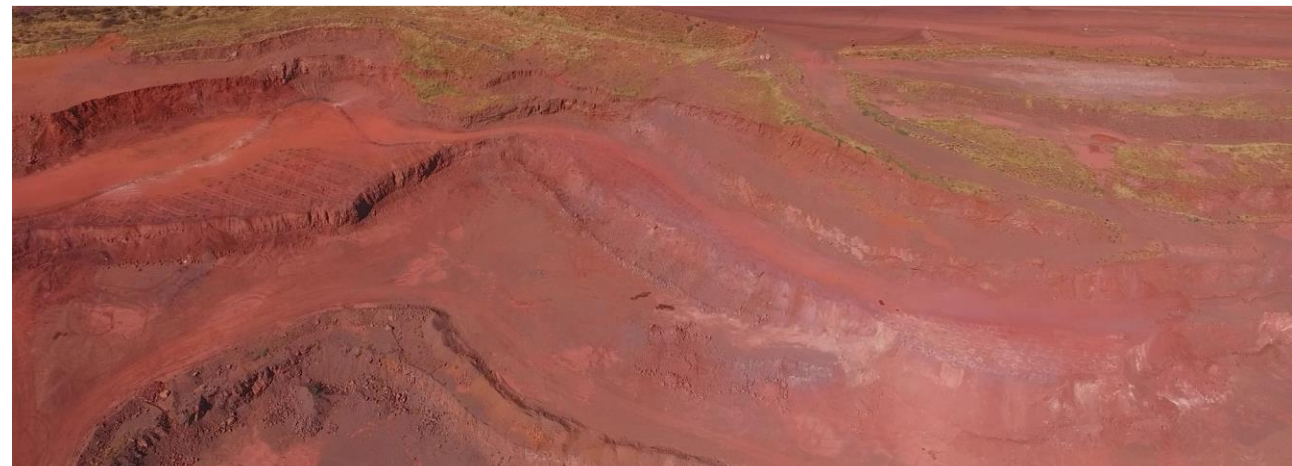
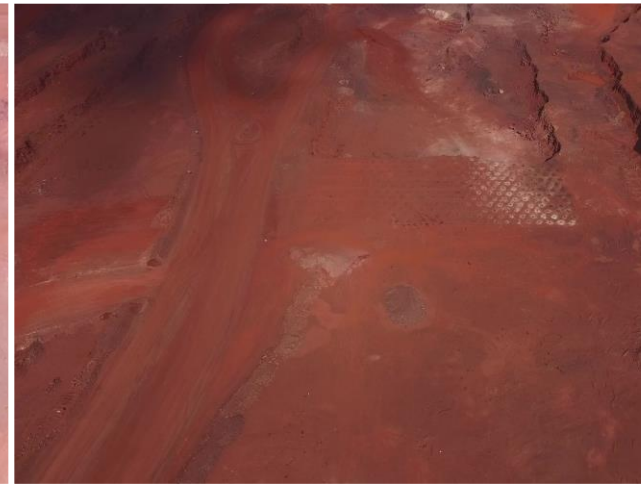




Varistem® Blast Stemming Plugs Trials

Feedback Report

Iron Ore Fragmentation Improvement



Particle Size Distribution (PSD) Context

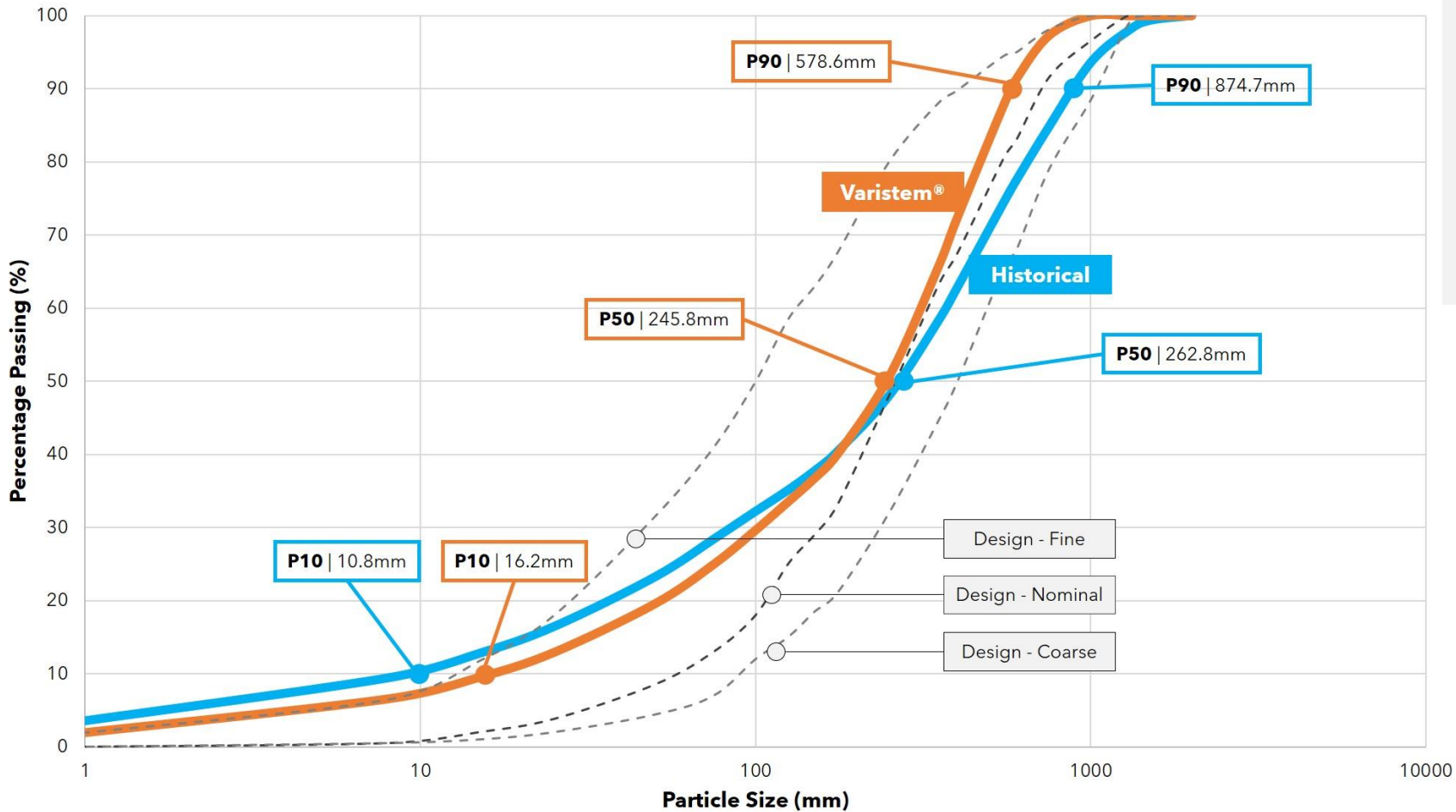
In order to understand and analyse the particle size distribution (PSD) data and how it fits into the plant design curve the following needs to be noted.

- The muckpile (material remaining after a blast block) is analysed and categorized in terms of the percentage of material passing a specific size.
- The distribution of this size data is illustrated on the PSD and entails a variety of sizes from fines (small) to coarse (large) material
- A set of data/distribution curve has to be viewed holistically

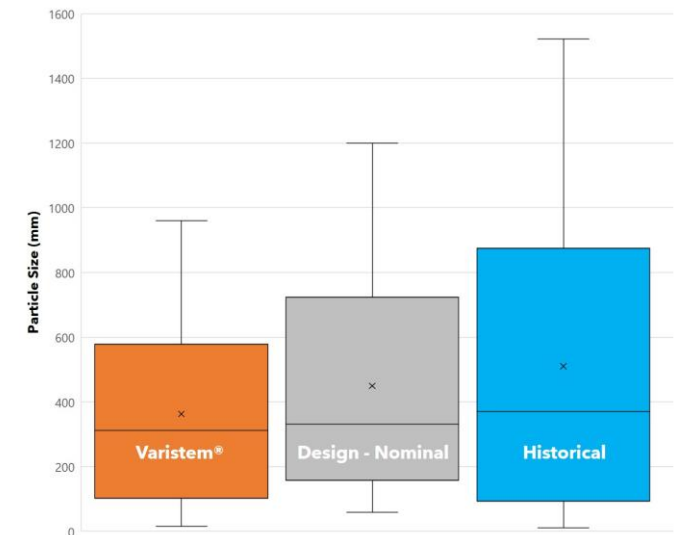
Plant Curve & Important parameters

- The processing plant works optimally when the particles fed through the plant is in a specific size range (Envelope range)
- The plant has a maximum range of large particles that it can process (**upper/Coarse envelope limit**)
- The plant has a maximum range of small particles that it can process (**lower/fines envelope limit**)
- The plant has an ideal range of particle sizes that allows it to run optimally (**Nominal design curve**)
- **Effort should be made to produce a particles size distribution that fits within the lower and upper distribution envelope, and ideally sits on the Nominal curve.**
- Important data to consider in an envelope is your:
 - P10 (Fines): 10% of the material is smaller than the indicated size (mm)
 - P50 (Median): 50% of the material is smaller than the indicated size (mm)
 - P90 (Oversize): 90% of the material is smaller than the indicated size (mm)
 - P99.95 (Topsize): 99,95% of the material is smaller than the indicated size (mm)

PARTICLE SIZE DISTRIBUTION COMPARISON – IRON ORE MINE X



- P10: Less fines with Varistem® and inside design envelope, thus better conformance resulting in an improvement for the plant.
- P50: More or less same deviance from nominal.
- P90: Less oversize with Varistem®, thus efficiency gains for loading and crushing.
- Topsize: Varistem® 961mm vs. Historical 1521mm (a reduction of 37%).
- Steepness: Varistem® line steeper meaning there is a lesser variance in overall PSD.
- Varistem leads to better energy retention that causes the PSD to be more consistent throughout the block. This allows for adjustments in blast design to be made more easily as the variance is better controlled when Varistem® is used.



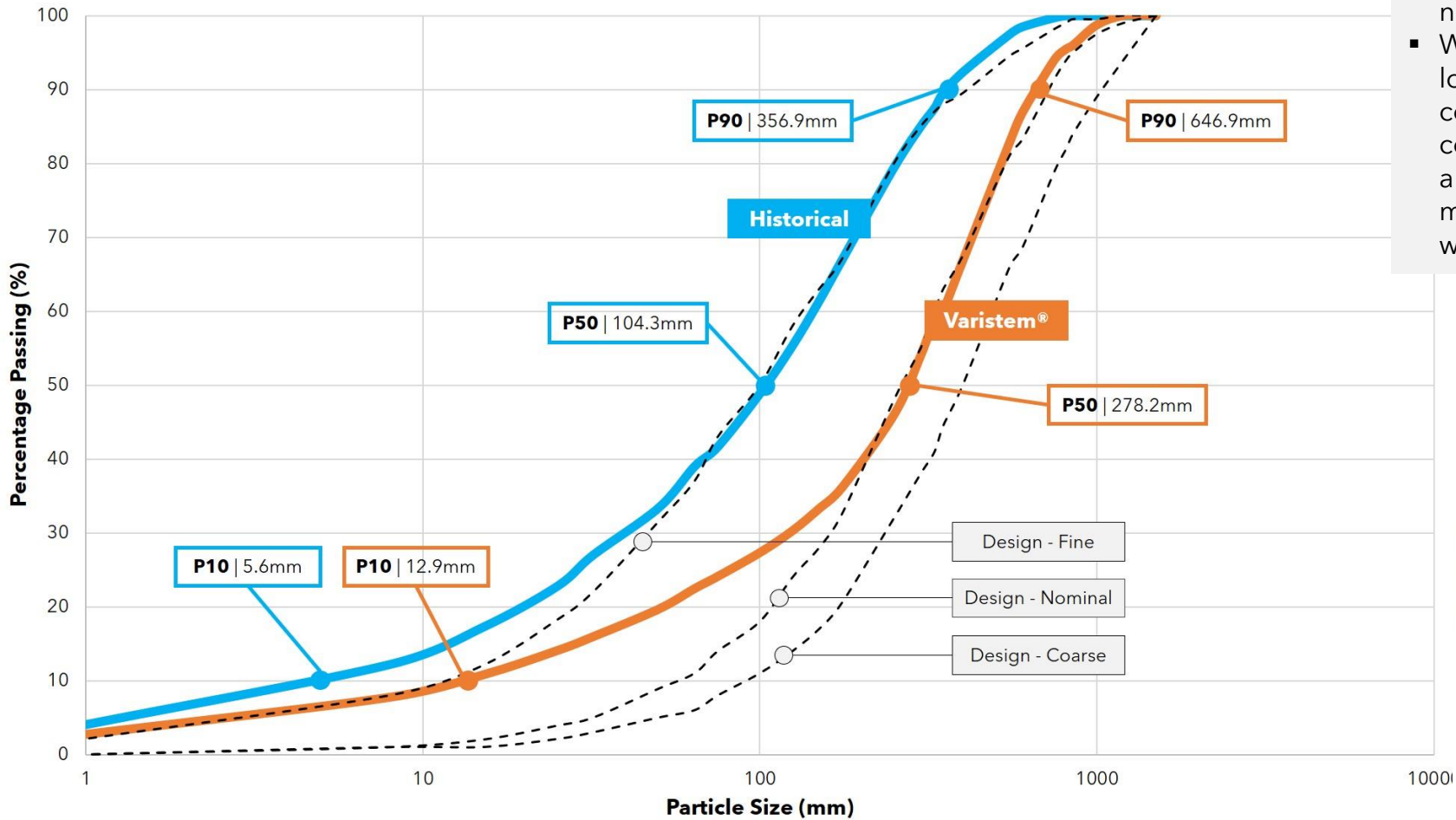
PARTICLE SIZE DISTRIBUTION COMPARISON – IRON ORE MINE X

Iron Ore Mine X - Analysis with regard to the Nominal

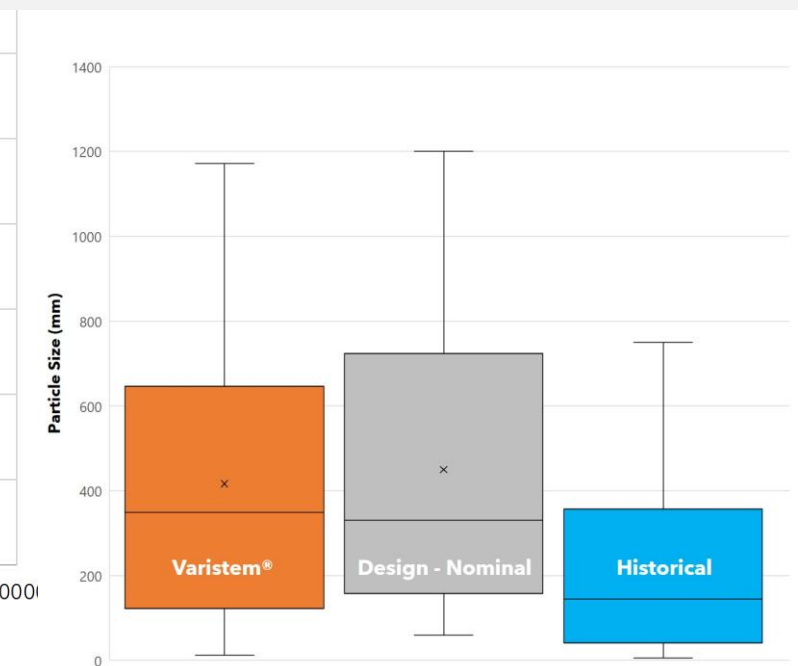
The analysis will be done comparing the average of the historical blast results, and the Varistem® blast results to the Nominal curve (the most optimal curve)

- The plant requires less than 3,5% of material to be larger than 1000mm, and none larger than 1300mm. Historic data shows that 6,4% of material is larger than 1000mm (83% more than required) with Varistem® data at 0% larger than 1000mm.
- The topsize particles (P99.95) has been reduced from 27% coarser, to 20% finer than the nominal curve requirements. This is a 47% reduction in the top size particles allowing for efficiency gains in loading& hauling, and crusher throughput.
- Oversize particles (P90) has been reduced from 22% larger than the nominal size to 19% smaller than the nominal. This 41 % reduction in oversize allows for efficiency gains in loading and hauling cycles, and crusher throughput. It also reduces costs for secondary breakage.
- 50% of the material is more or less the same size with historic data at a 2% deviation from the nominal, compared to 8% for Varistem®. Both Historic and Varistem® data is on the finer side of the curve.
- The use of Varistem® has improved the fines (P10) conformance curve with 9% from historic data. The fines from historic data was outside of the allowable envelope. Varistem® helped to reduce fines to an extent that it is now 25% coarser than the maximum fines allowed.
- The overall size difference (difference between largest to smallest size) for the nominal curve is 1140mm, 1510mm for historic and only 944mm for Varistem®. This indicates an overall more uniform size distribution that allows for increase efficiency in the plant.

PARTICLE SIZE DISTRIBUTION COMPARISON – IRON ORE MINE Y



- P10: Less fines with Varistem® and inside design envelope, thus better conformance resulting in an improvement for the plant.
- P50: Major difference with Varistem® showing better conformance to the nominal line.
- P90: Varistem® conforms to the nominal curve meaning it is more ideal for the plant.
- Steepness: Varistem® line conforming more to nominal.
- With the use of Varistem® the energy is retained longer causing the energy to be distributed more consistently throughout the block leading to better conformance to the nominal line. Once again this allows for adjustments in blast design to be made more easily as the variance is better controlled when Varistem® is used.



PARTICLE SIZE DISTRIBUTION COMPARISON – IRON ORE MINE Y

Iron Ore Mine Y

The analysis will be done comparing the average of the historic blast results, and the Varistem® blast results to the Nominal curve (the most optimal curve). It is important to note that the historic data on Iron Ore Mine Y indicates that the majority of the material is way too fine, sitting outside of the required envelope or just on the maximum required fines. Varistem® has helped to improve on the by reducing the fines to an extent that it is within the envelope and almost matches the nominal curve for about 60% of the material.

- The plant requires less than 2,5% of material to be larger than 1000mm, and none larger than 1300mm. Historic data shows that 0% of material is larger than 1000mm with Varistem® data at 1,3% larger than 1000mm well within the envelope.
- The deviation of the topsiize particles (P99.95) has been reduces from 33% to fine material, to only 2% finer than the nominal curve requirements. This is a 31% improvement on conformance of the topsiize to the nominal curve by Varistem® compared to historic.
- Deviation of the Oversize particles (P90) has been reduced from 50% to fine material, to only 10% finer than the nominal curve requirements. This is a 40% improvement on conformance of the oversize to the nominal curve by Varistem® compared to historic. Historic data was outside the fines envelope and has been improved to sit well within the required envelope. This improvement allows for efficiency gains in loading and hauling cycles, and crusher throughput.
- 50% of the material showed a deviation of 61% to fine from the nominal curve and has been improved to a mere 4% deviation to the coarser side of the nominal curve. This 65% improvement in making the material coarser with Varistem® has allowed the particle distribution to align with the majority of the nominal curve. This is a major gain and will increase plant performance and reduce maintenance dramatically.
- The deviation of the maximum allowable fines from the nominal (according to the plant curve) is 80%. Historic data showed that the majority of fines did not at all conform to the envelope at a deviation of 91%. The use of Varistem® has improved the fines (P10) conformance curve with 13% from historic data allowing the material to fall within the required plant design curve.



THANK YOU

Contact Us

www.ergindustrial.com | info@ergindustrial.com | +27 72 226 7759